

# HOW TO REDUCE INJURIES & ILLNESS WITH A SAFETY PROGRAM



# OBJECTIVES

- ★ Basic elements of a safety program
- ★ What and how to measure effectiveness or performance?



# BASIC ELEMENTS OF THE SAFETY PROGRAM

- ★ 1. Management involvement and employee participation
- ★ 2. Worksite analysis
- ★ 3. Hazard Prevention and Control
- ★ 4. Training
- ★ 5. Monitoring of the program



# MANAGEMENT INVOLVEMENT AND EMPLOYEE PARTICIPATION

- ★ Who is in charge?
- ★ What is the “pecking order”?
- ★ What is the program objectives/goals?
- ★ How will everyone be held accountable?
- ★ How will employees participate in the program?



# WORKSITE ANALYSIS

- ★ Who will conduct the worksite analysis? (Employees included?)
- ★ How will it be accomplished?
- ★ When will it be finished?



# HAZARD PREVENTION AND CONTROL

- ★ What are the mitigation methodologies for the hazards shown in the worksite analyses?
- ★ Who will implement and monitor implementation?
- ★ How will the mitigation methodologies be implemented?
- ★ What is the budget?



# TRAINING

- ★ What are the training requirements?
- ★ Who will be trained? Start at the Sr. management level and work down.
- ★ How will training be accomplished?  
Where is the plan?
- ★ Who will monitor and measure effectiveness?



# MONITORING THE PROGRAM

- ★ What to measure?
- ★ How to measure?
- ★ How to monitor?
- ★ Who will monitor?

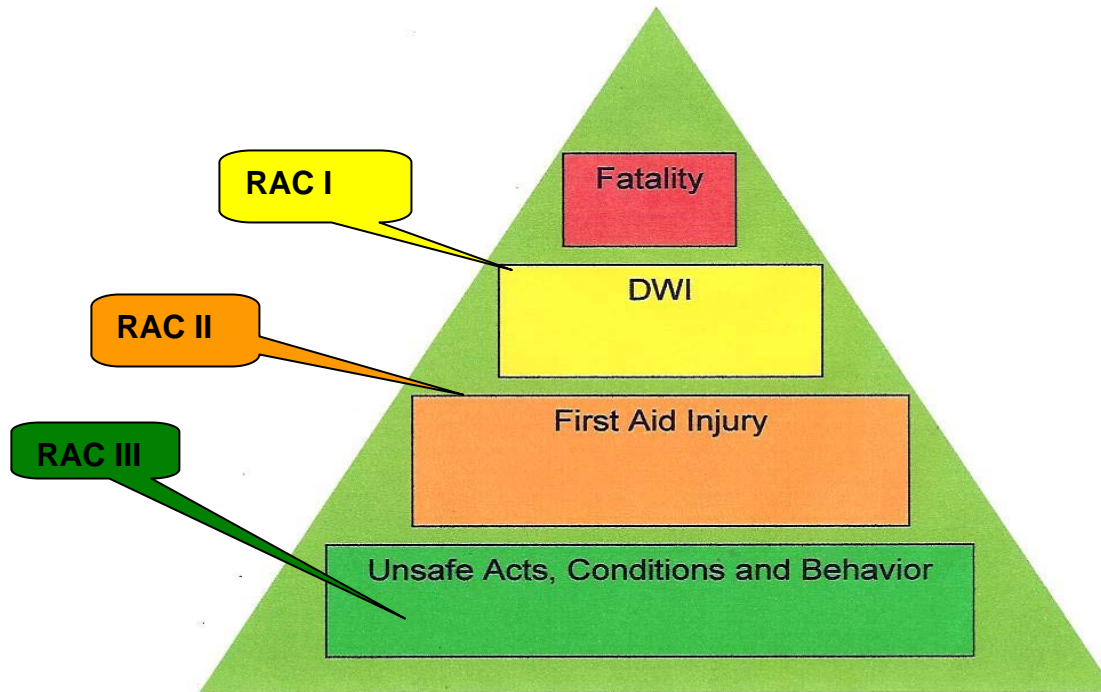


# DO WE MEASURE INJURY & ILLNESS?

- ★ Do we want to measure after-the-fact or negative measures?
- ★ After-the-fact measures is like counting money spent.
- ★ Preventive measures is like counting money saved or invested.



# SAFETY TRIANGLE



# SAFETY OBSERVATIONS

- ★ Observations can be plotted to tell a story.
- ★ A non-penal and objective view of the program is needed to prevent injury and illness.
- ★ The observations reflect the program objectives and program elements.



# WHAT ARE SAFETY OBSERVATIONS?

- ★ Observations by participants to reflect a snapshot of events.
- ★ Observations by participants to define the trends.
- ★ Observation by participants to measure the outcome of implementing a safety program.



# ELEMENTS OF SAFETY OBSERVATIONS

- ★ A violation of a requirement, unsafe behavior or conditions.
- ★ Each observation is assessed by risk.
- ★ Categorize the observation.
- ★ Define areas of the company to pinpoint trends



# ELEMENTS OF AN OBSERVATION

- ★ Date
- ★ Description of observation
- ★ Risk assessment or risk assessment code, e.g., I=imminent danger, II=Serious, etc.
- ★ Category, e.g., ladder, fall protection, etc.
- ★ Department or area.

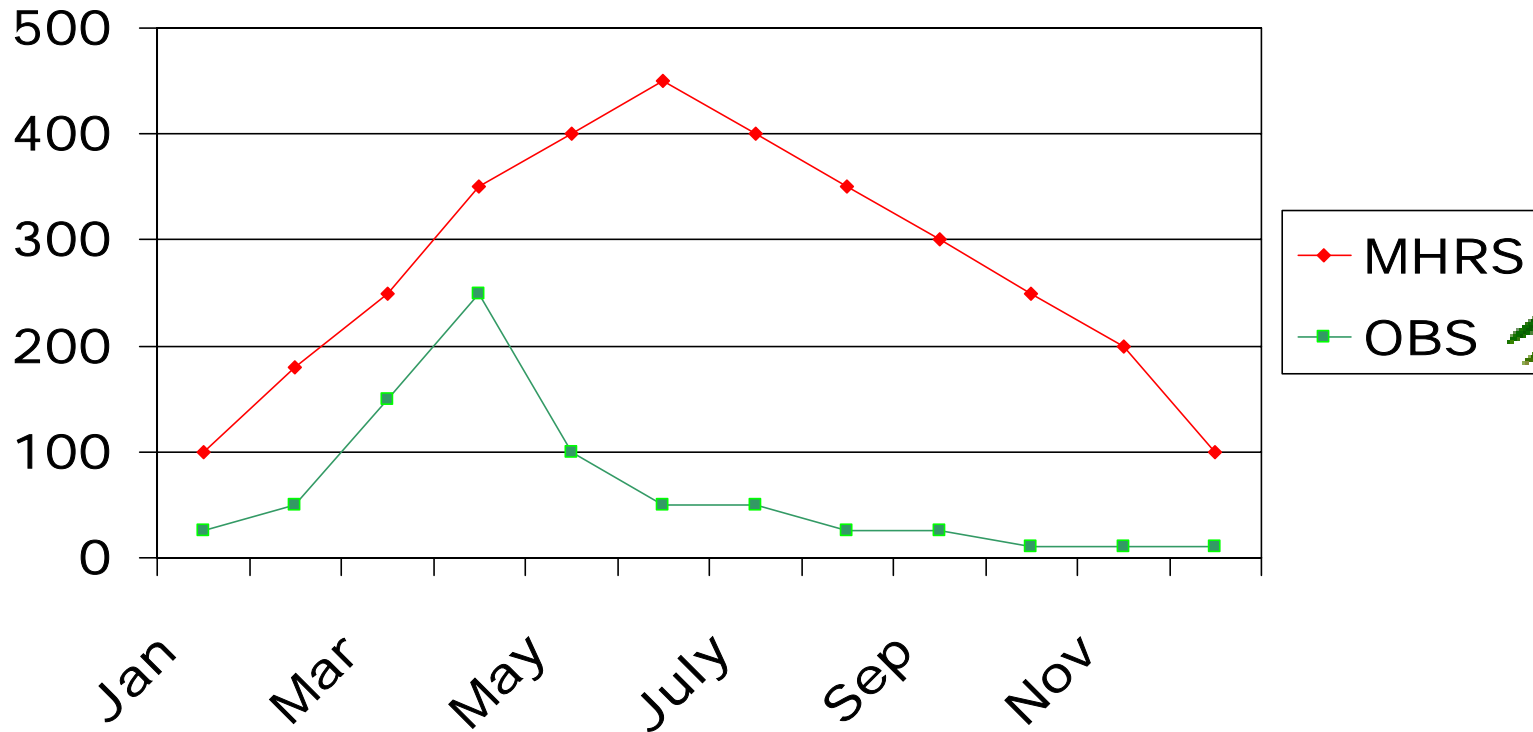


# ANALYZE AND TREND THE OBSERVATIONS

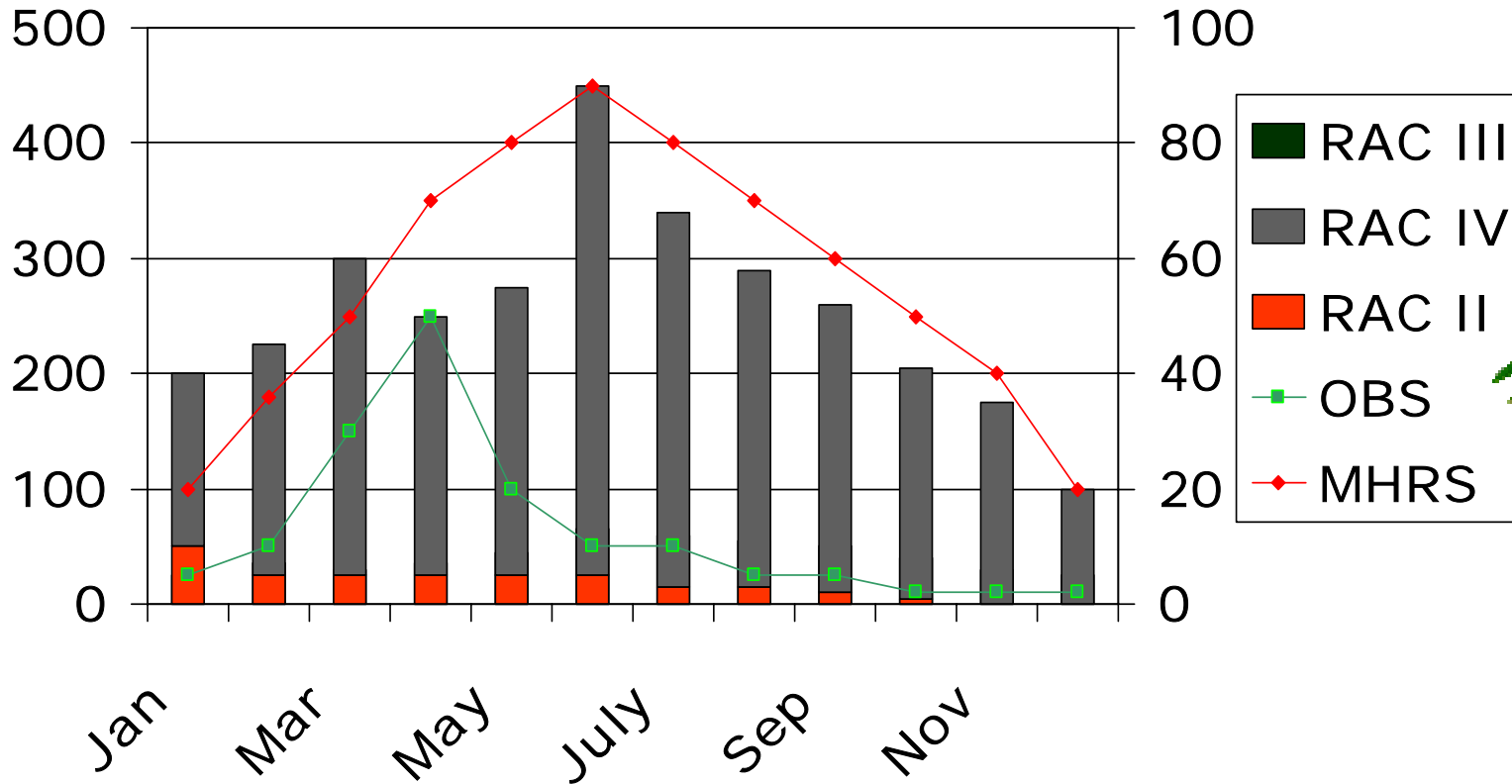
- ★ Use a database to allow sorting of the fields.
- ★ Look at the risk assessments to determine severity.
- ★ Look at the categories to determine frequency.
- ★ Look at the area to determine site specific information.



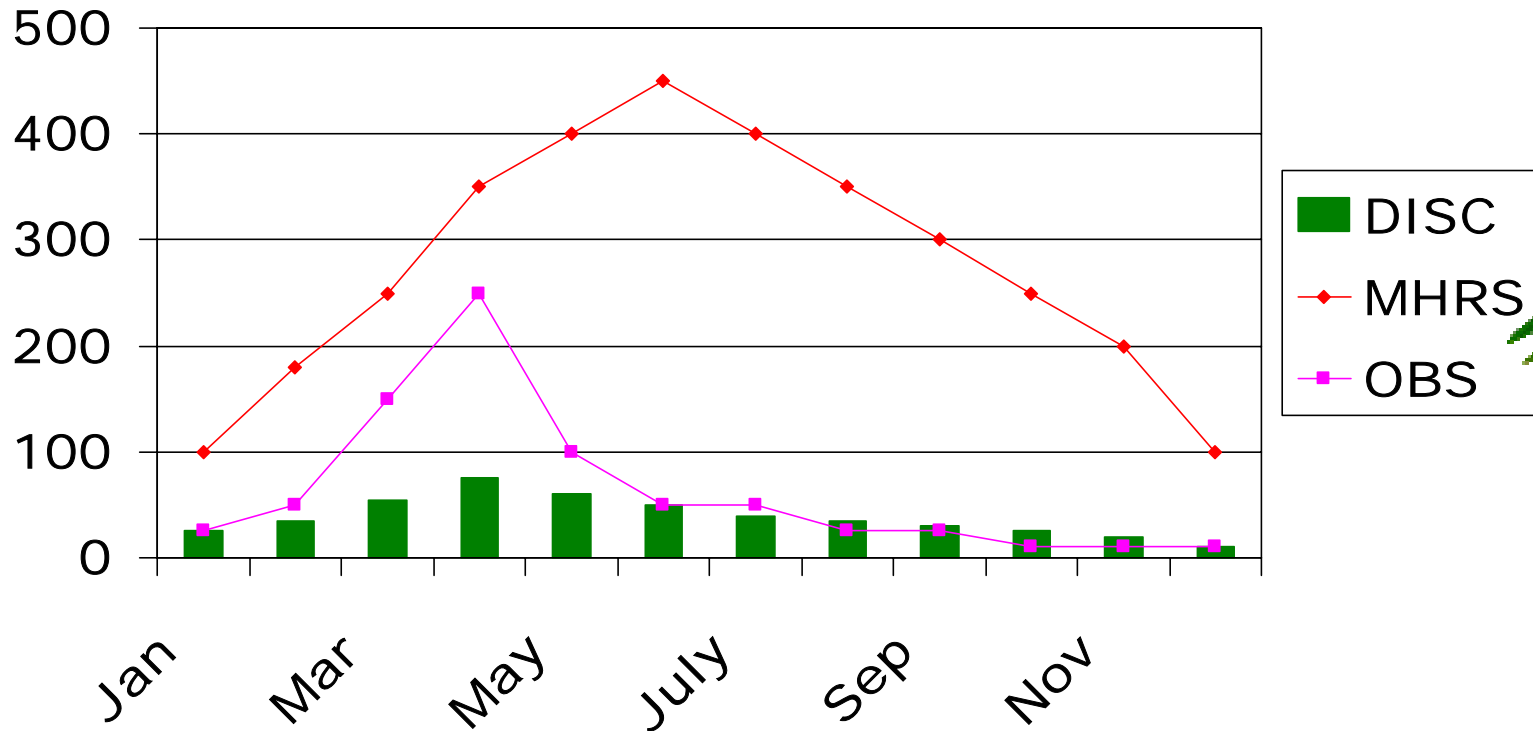
# OBSERVATIONS VS. PRODUCTIVITY



# OBSERVATIONS AND RAC



# DISCIPLINARY ACTIONS VS. MHRS



# PARTICIPATION

